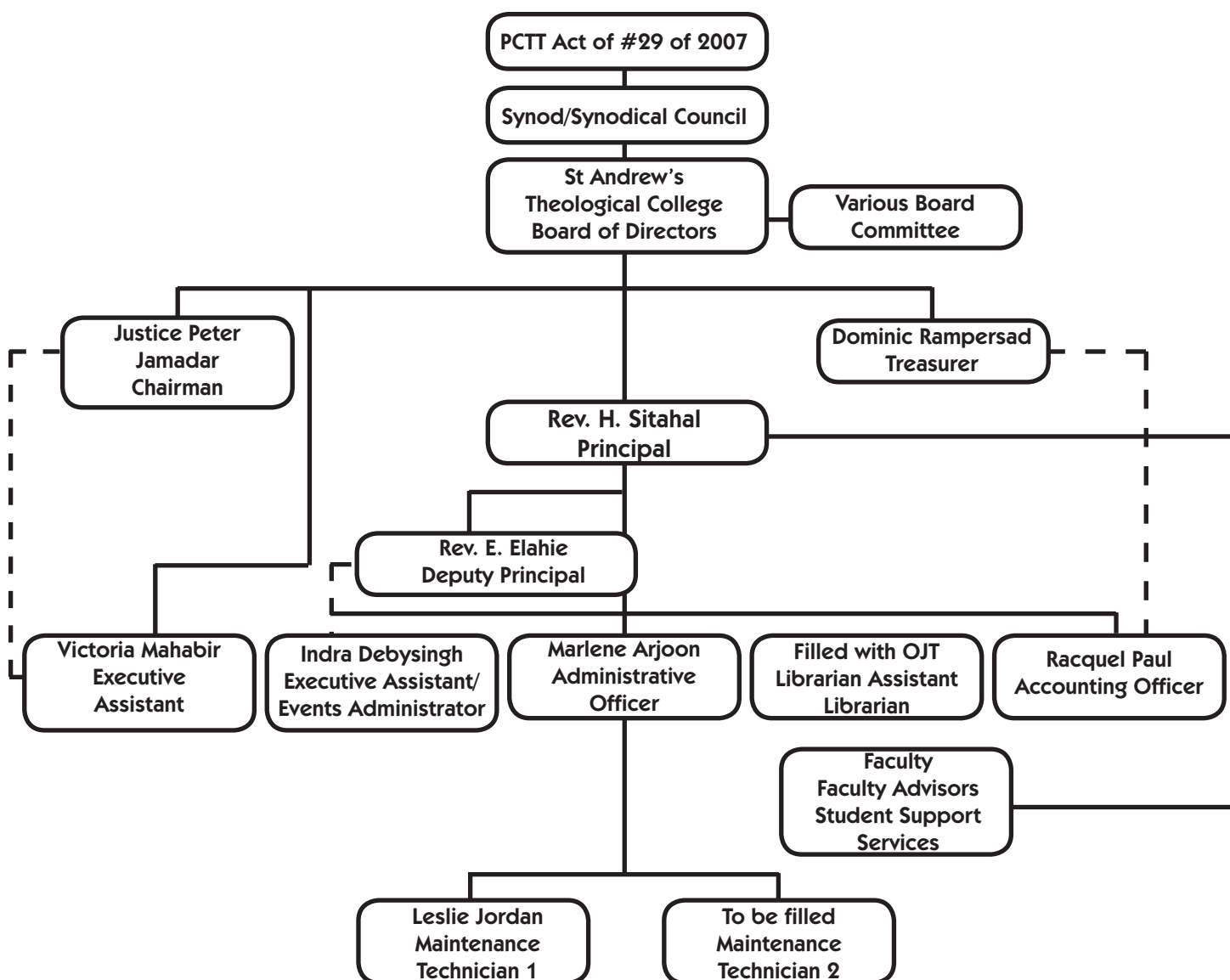


# CATEGORY IV

## PREPAREDNESS FOR CHANGE

Strategic Planning necessitated by the duties and responsibilities outlined in the Bye-Laws of the SATC<sup>215</sup> has enabled the SATC to identify the need for a new organisational structure to satisfy the functional needs of the College. The following is the new and current organisational structure in terms of Governance and Human Resource:

### ST ANDREW'S THEOLOGICAL COLLEGE



215 Appendix 9, 'Bye-laws of SATC